

COMPLETE HOSPITAL

DOCTORS HOSPITAL OF SHREVEPORT
1130 Louisiana Ave., Shreveport, LA 71101

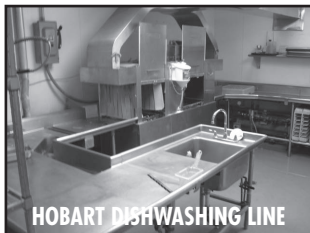
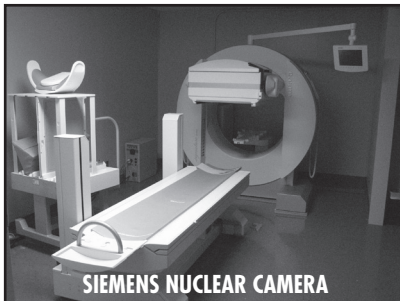
Preview: Tuesday, February 28, 9 AM - 4 PM

RADIOLOGY

- Siemens Somatom Emotion CT, Mdl. 16, New 2006
- (3) GE Portable X-Ray, Mdl. AMX4+
- Siemens Nuclear Camera, E-Cam Signature Series
- General Hospital Support Equipment

COMPLETE COMMERCIAL KITCHEN

- Hobart Dishwashing Line
- McCall s/s Refrigerator, 6-Door
- Including: Gas Range * Ovens * Griddles * Vent Hoods * Mixers * Ice Maker * Sinks * Refrigerators * Freezers * Slicers * Serving Lines * Display Carts * And Much More!



ROSEN SYSTEMS

Bidding Online At:
www.RosenSystems.com

info@rosensystems.com

In Conjunction With



CENTURION
SERVICE GROUP

CenturionService.com

15% Buyer's Premium will apply. Credit Card required for online registration. Payment by Cash, Cashier's Check or Check w/Bank Letter of Guarantee. Check our website for complete terms.



2323 Langford • Dallas, TX 75208

(972) 248-2266 / (800) 527-5134 • Fax (972) 248-6887

www.rosensystems.com

Auctioneer: Michael Rosen LA Lic. #9 17

PRESORTED
FIRST CLASS
U.S. POSTAGE
PAID
DALLAS, TX
PERMIT NO. 3251

COMPLETE HOSPITAL



**COMPLETE
COMMERCIAL
KITCHEN**

BIDDING CLOSES

Thursday, March 1

HAVE SURPLUS EQUIPMENT?

Contact Rosen Systems for details about our next
Auction XChange: info@rosensystems.com